

Klinger T160 XS: Nivåställ transparent för ånga applikationer
Lämplig för avstängningsventiler:

Mjuktätande avstängningsventiler Modell D (med packning) eller modell DG (med nipplar).

Klinger T160 XS: transparent level gauge for steam application and suitable for shut-off fittings:

Soft sealed gauges cocks, model D (with packing) or model DA (with connecting piece).

| Tryck och temperatur | Working conditions | |
|----------------------|--------------------|-------|
| | P max | T max |
| Ånga/steam (D) | 40 bar | 252°C |
| Ånga/steam (DA) | 60 bar | 270°C |

Klinger materialkoder

FS/H: Mediaberörda delar i kolstål

(*) Andra material mot förfrågan

Klinger material-codes

FS/H: components in carbon steel

(*) Other materials on request

Tillbehör

Dränerings- och avluftningsventiler
Extern värme eller kylning
Frostskydd
Graderad skala
Belysning
Lamell typ Mica eller Kel-f

Accessories

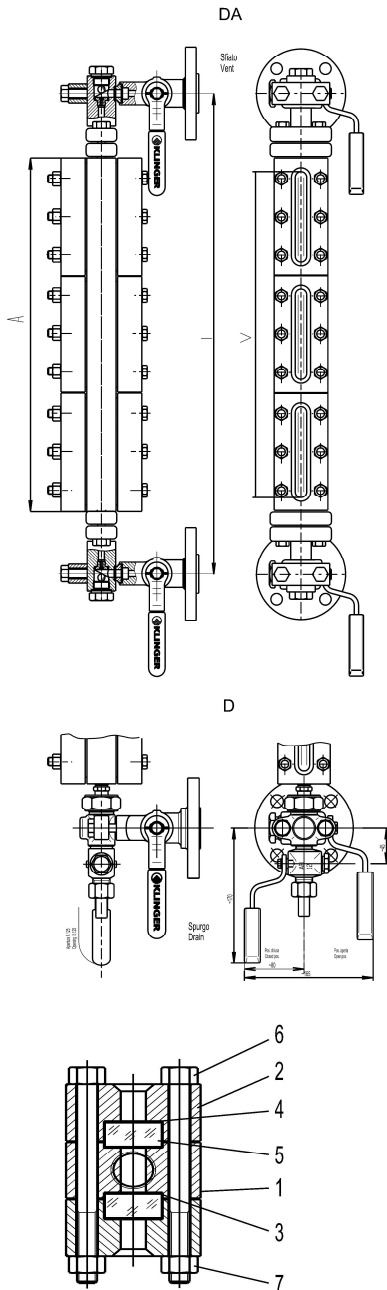
Drain/vent cocks
External heating or cooling
Non-frosting block
Graduated scale
Illuminator
Mica or Kel-shields

Enligt PED 2014/68/UE om tillämpligt
Compliance to PED 2014/68/UE when applicable

Enligt ATEX 2014/34/UE mot förfrågan
Compliance to ATEX 2014/34/UE upon request

Caratteristiche e dimensioni possono essere soggette a modifiche senza preavviso

Design and dimensions could be subject to modification without notice



| Storlek | Längd Hus | Visningslängd (V) | Ca. Vikt | Minimum avstånd center till center (mm) (I) | |
|----------|-------------|-------------------|---------------|---|--|
| | | | | Minimum center to center distance (mm) (I) | Minimum center to center distance (mm) (I) |
| Size | Body length | Sight length (V) | Approx weight | D | DA |
| | A | A-35 | Kg | A+102 | A+132 |
| I | 128 | 93 | 10,5 | 230 | 260 |
| II | 153 | 118 | 12,0 | 255 | 285 |
| III | 178 | 143 | 13,5 | 280 | 310 |
| IV | 203 | 168 | 14,0 | 305 | 335 |
| V | 233 | 198 | 15,0 | 335 | 365 |
| VI | 263 | 228 | 16,0 | 365 | 395 |
| VII | 293 | 258 | 17,5 | 395 | 425 |
| VIII | 333 | 298 | 20,0 | 435 | 465 |
| IX | 353 | 318 | 21,5 | 455 | 485 |
| 2 x IV | 408 | 373 | 28,0 | 510 | 540 |
| 2 x V | 468 | 433 | 30,5 | 570 | 600 |
| 2 x VI | 528 | 493 | 32,0 | 630 | 660 |
| 2 x VII | 588 | 553 | 35,0 | 690 | 720 |
| 2 x VIII | 668 | 633 | 40,5 | 770 | 800 |
| 2 x IX | 708 | 673 | 43,0 | 810 | 840 |
| 3 x VI | 793 | 758 | 48,0 | 895 | 925 |
| 3 x VII | 883 | 848 | 52,5 | 985 | 1015 |
| 3 x VIII | 1003 | 968 | 61,0 | 1105 | 1135 |
| 3 x XI | 1063 | 1028 | 64,5 | 1165 | 1195 |
| 4 x VIII | 1178 | 1143 | 70,5 | 1280 | 1310 |
| 4 x VIII | 1338 | 1303 | 81,5 | 1440 | 1470 |
| 4 x IX | 1418 | 1383 | 86,0 | 1520 | 1550 |
| 5 x VII | 1473 | 1438 | 88,0 | 1575 | 1605 |
| 5 x VIII | 1673 | 1638 | 102,0 | 1775 | 1805 |
| 5 x IX | 1773 | 1738 | 107,5 | 1875 | 1905 |
| 6 x VIII | 2008 | 1973 | 122,5 | 2110 | 2140 |
| 6 x IX | 2128 | 2093 | 129,0 | 2230 | 2260 |
| 7 x VIII | 2343 | 2308 | 143,0 | 2445 | 2475 |
| 7 x IX | 2483 | 2448 | 151,0 | 2585 | 2615 |

| | Delar - Parts | Material - Materials* |
|---|---------------------------|-----------------------|
| | | FS/H |
| 1 | Hus/level gauge body | ASTM A 105 |
| 2 | Front/cover | ASTM A 105 |
| 3 | Tätning/sealing gasket | GRAPHITE PDM |
| 3 | Lamell Mica / Mica Shield | MICA |
| 4 | Packning/cushion joint | KLINGERSIL |
| 5 | Glas "B"/glass "B" | BOROSILICATE |
| 6 | Bultar/bolts | B7 |
| 7 | Muttrar/nuts | 2H |